

AH-HED1...type Pressure Relay

AH-HED1...40S...type

Max. Working Pressure: 500bar



Contents

Function and configuration	02
Symbols	02
Specification	03
Technical data	04
Characteristic curves	05
Unit dimensions	06

Features

- With or without drain port
- For threaded connection

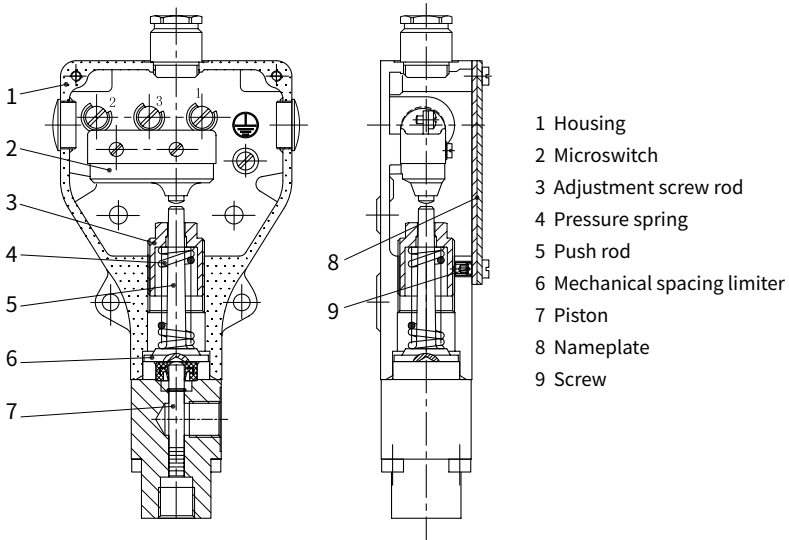
Function and configuration

AH-HED1 type relay is a piston type pressure relay. It consists of the housing(1), microswitch(2), adjustment screw rod(3), and pressure spring(4).

When the hydraulic system receives the set pressure, the pressure switch will send out an electric signal to begin sequent operation or security protection by controlling some electric components.

Adjustment of the switching pressure:

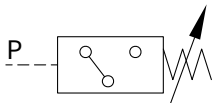
To adjust the switching pressure, the nameplate (8) must first be removed then loosen the screw (9). The switching pressure is set by rotating the adjustment screw (3). After adjusting, refit the name plate (8) and tighten the screw (9).



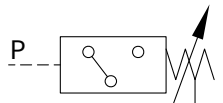
08

Symbols

Electric circuit

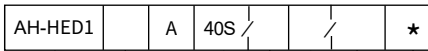


Without drain port



With drain port

Specification



Pressure Relay

With drain port = K

Without drain port = O

Series 40S to 49S = 40S

max. adjustable pressure 100bar=100	AH-HED1K
max. adjustable pressure 350bar=350	
max. adjustable pressure 500bar=500	
max. adjustable pressure 50bar=50	AH-HED1O
max. adjustable pressure 100bar=100	
max. adjustable pressure 350bar=350	

Further details in clear text

Connection thread

No code = Inch threaded (G1/4)

2 = Metric threaded (M14×1.5)

No code = NBR seals

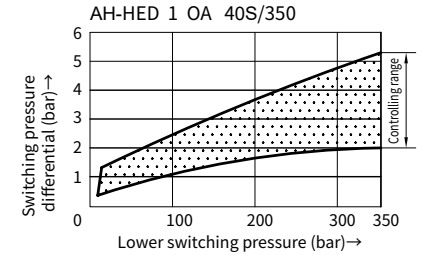
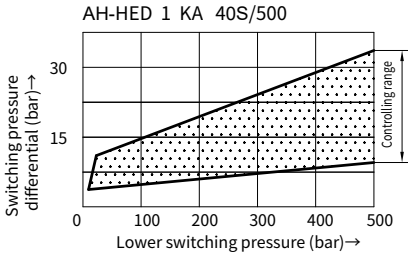
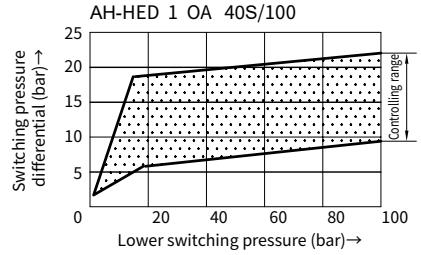
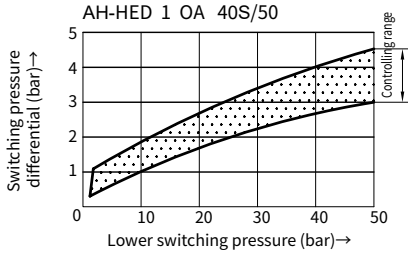
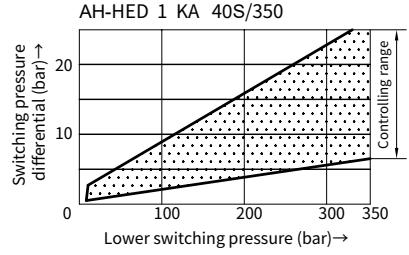
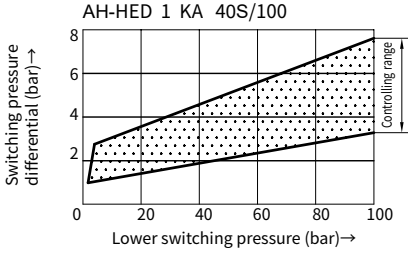
V = FKM seals

Technical data

Fluid		Mineral oil and Phosphate ester			
Fluid temperature range		°C	-30 to +80		
Viscosity range		mm ² /s	10 to 800		
Switchover precision		<2% setting range			
Switchover frequency	AH-HED1 KA 40S/	Up to 300 times/min			
	AH-HED1 OA 40S/	~ 50 (briefly also... 100) /time/min.			
Pressure in drain port		~ 2bar			
Setting ranges for AH-HED 1 KA40S/..(bar)					
Pressure rating	Max. operating pressure briefly	Falling pressure		Rising pressure	
		min.	max.	min.	max.
100	600	3	92	6	100
350	600	6	325	10	350
500	600	10	465	20	500
Setting ranges for AH-HED 1 OA40S/..(bar)					
Pressure rating	Max. operating pressure briefly	Falling pressure		Rising pressure	
		min.	max.	min.	max.
50	80	2	45	3.5	50
100	350	3	82	8	100
350	350	6	295	20	350
Electrical connection		Cable gland (max.cable diameter is 11 mm) PG 11 plug-in connector			
Connection cross section	Cable gland	mm ²	~4		
Contact loading	AC	460V, 15A			
	DC	40V, 1A; 125V, 0.4A; 250V, 0.2A			
For DC voltages with inductive loading spark suppression is recommended to increase service life.					
Insulation to DIN40050		IP65			
Weight		0.8kg			

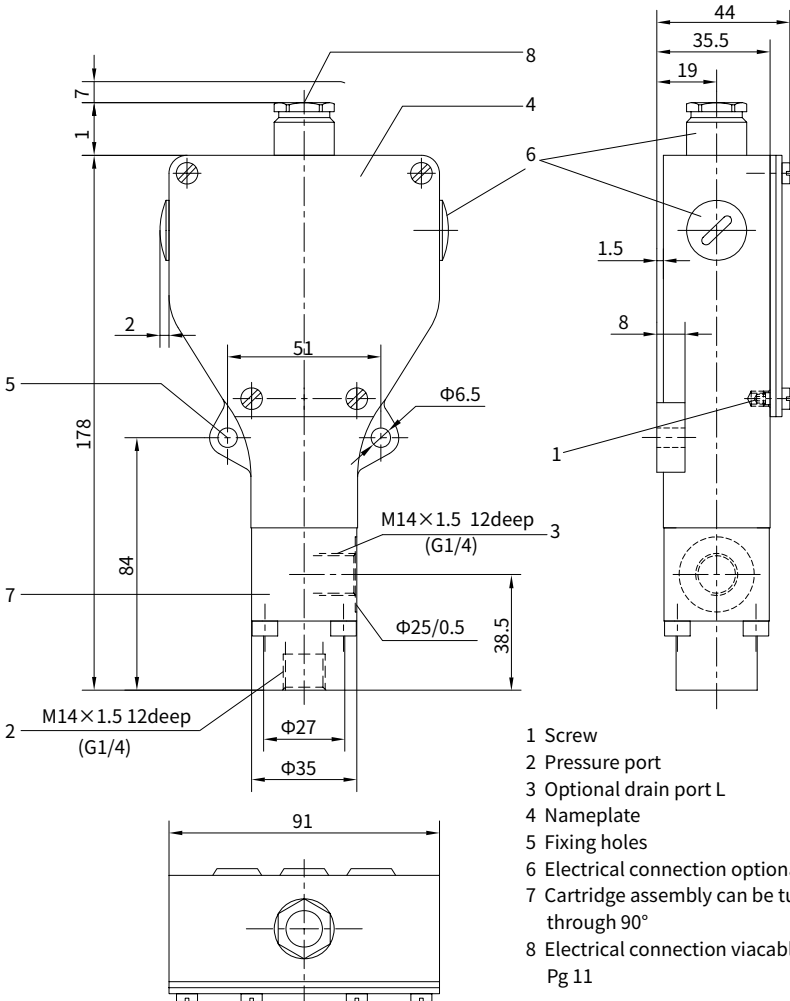
Characteristic curves

(Measured at $t=40^{\circ}\text{C} \pm 5^{\circ}\text{C}$, using HLP46)



Unit dimensions

(Dimensions in mm)



- 1 Screw
- 2 Pressure port
- 3 Optional drain port L
- 4 Nameplate
- 5 Fixing holes
- 6 Electrical connection optional Pg 11,
- 7 Cartridge assembly can be turned through 90°
- 8 Electrical connection viacable gland Pg 11

08