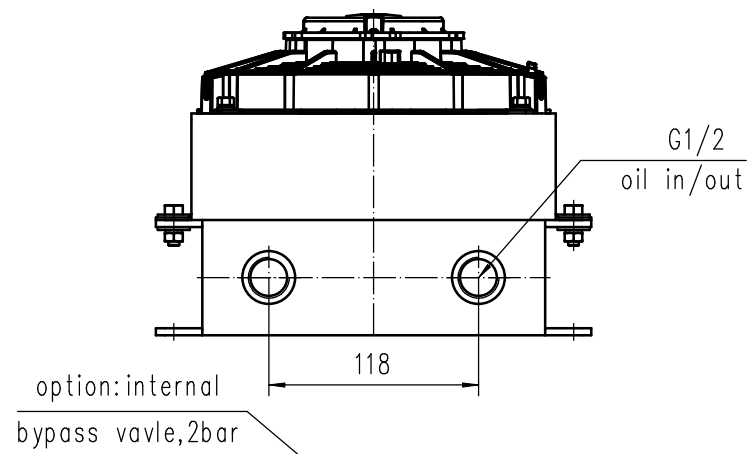
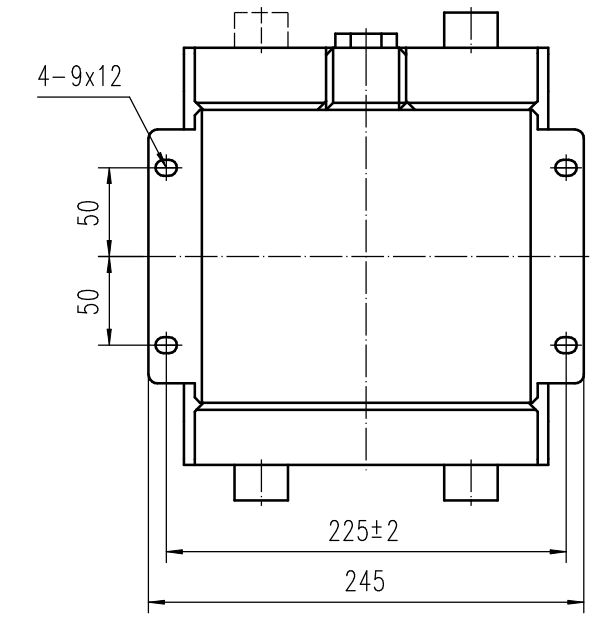
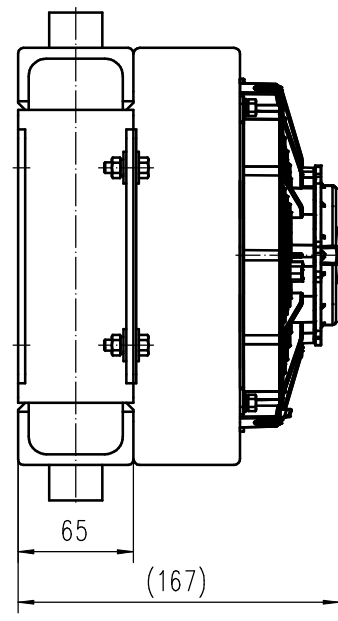
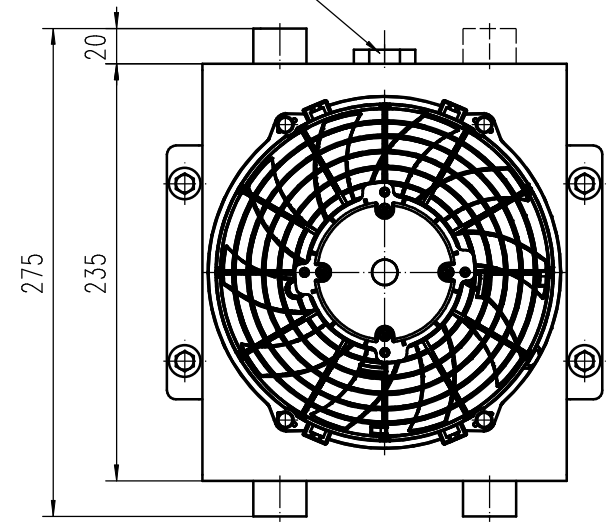


Table of tolerances for welding and non machined surface							surface roughness	
Nominal dimension	First		>300	>600	>1000	>2000	heat treatment	
	End	300	600	1000	2000	3000	surface treatment	
Allowable tolerance		±1	±1.5	±2	±3	±4	general tolerance	HB5800-99



Technical information

Oil flow (L/min)	Capacity (L)	Voltage (V)	Current (A)	Power (W)	Air flow (m3/h)	Protection Level
0-150	0.6	24	2.6	69	560	IP 68



Technical requirement

1. The products are designed, manufactured and tested in accordance with NB/T47006-2009 aluminum plate fin heat exchanger;
2. Before the assembly, the thread of each connection is smooth; all bolts are fastened and free of looseness;
3. The radiator surface spray black paint, steel components spray black powder;
4. Airtight test pressure 2.5MPa, keep pressure for 5 minutes, no leakage and deformation, clean and dry inner cavity, each pipe seal.

				AH-170-D2-24VDC		Product model									
				Heat exchanger		Assembly drawing number									
						Original code									
						Stage		Weight		Quantity		Proportion			
Change tag				Change number		Signature		Date		S		1		1:3	
Design															
Proofread															
Review															
Validation															
Technology															
Examination															
Duty				Signature		Date									

