

AH-Z2S6...type Modular Hydraulic Operated Check Valve

AH-Z2S 6...60S...type

Size 6
Max. Working Pressure: 315 bar
Max. Flow: 60 L/min



Contents

Function and configurations	02
Specifications	02
Symbols	03
Technical data	03
Characteristic curves	04
Unit dimensions	04

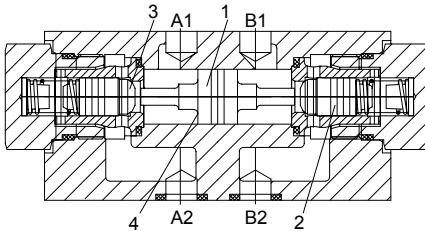
Features

- Sandwich plate valve
- Porting pattern to DIN 24 340 Form A, ISO 4401 and CETOP -RP 121 H
- Leakage-free closure for one or two actuator ports
- For use in sandwich stacking systems
- 3 different opening pressures, optional

Function and configuration

AH-Z2S6 type valve is a pilot operated check valve in sandwich plate design. It is used for the leakage-free closure of one or two actuator ports even during long standstill periods. Fluid flows freely in direction A1 to A2 or B1 to B2 and in the opposite direction the flow is blocked. If fluid flows from A1 to A2, the piston (1) is moved to the right and pushes the poppet (2) off its seat, then the pressure fluid may flow from B2 to B1.

In order to make the reliable closure of the poppets (2) the ports must be connected to tank when the directional valve is in the central position.



- | | |
|----------|-----------|
| 1 Piston | 3 Area A1 |
| 2 Poppet | 4 Area A2 |

Type: AH-Z2S6...-60S/..

Specification

AH	Z2S6			60S	/		*
----	------	--	--	-----	---	--	---

Modular Hydraulic check valve
Size 6

Leak-free closure in channels A and B = -
Leak-free closure in channel A = A
Leak-free closure in channel B = B

Opening pressure 1.5bar = 1
Opening pressure 3bar = 2
Opening pressure 7bar = 3

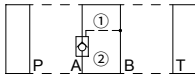
Further details in clear text

No code = NBR seals
V = FKM seals

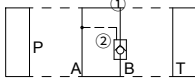
60S= Series 60S to 69S
Series 60S to 69S: unchanged installation
and connection dimensions)

Symbols (① = valve side, ② = sub-plate side)

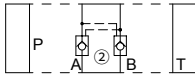
Type: AH-Z2S6A-60S/..



Type: AH-Z2S6B-60S/..



Type: AH-Z26-60S/..

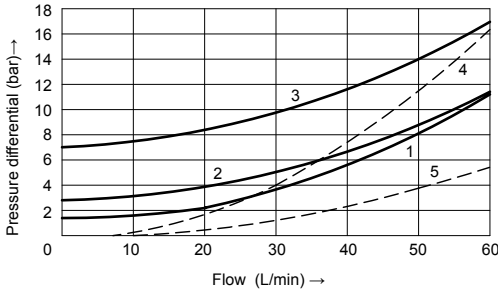


Technical data

Fluid		Mineral oil suitable for NBR and FKM seal Phosphate ester for FKM seal
Degree of contamination		Maximum permissible degree of fluid contamination: Class 9. NAS 1638 or 20/18/15, ISO4406
Pressure fluid temperature range	°C	-30 to +80 (NBR seal) -20 to +80 (FKM seal)
Viscosity range	mm ² /s	2.8 to 500
Operating pressure	bar	315
Max. flow-rate	L/min	60
Flow direction		See symbols
Flow freely opening pressure	bar	See curves
Ratio of areas		A1/A2=1/3
Weight	kg	Approx. 1.0

Characteristic curves

(Measured at $t=40^{\circ}\text{C} \pm 5^{\circ}\text{C}$, using HLP46)



— =A1 → A2; B1 → B2

- - - =A2 → A1; B2 → B1

1 Cracking pressure 1.5bar

2 Cracking pressure 3bar

3 Cracking pressure 7bar

4 Across check valve insert

5 Free flow (without check valve cartridge)

Types "A" and "B"

Unit dimensions

(Dimensions in mm)

